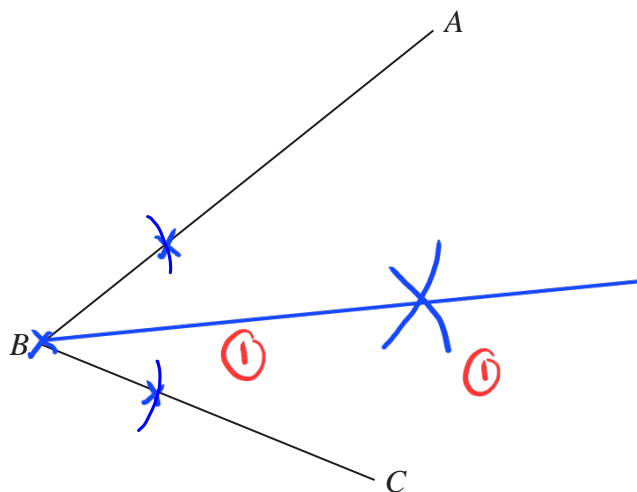


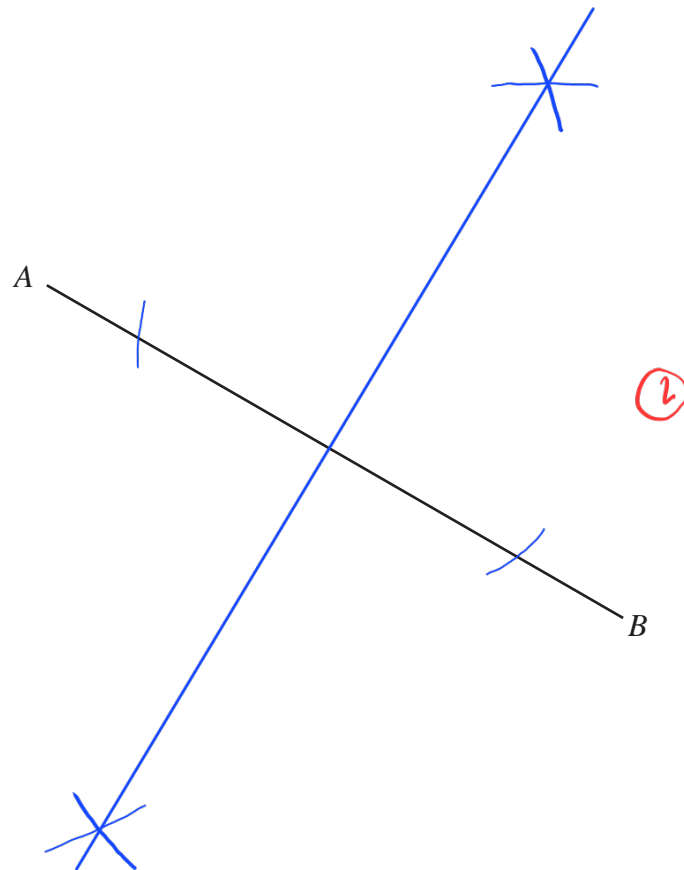
- 1 Using ruler and compasses only, construct the bisector of angle ABC .
You must show all your construction lines.



1. compass on B,
mark an arc on
AB and AC
2. compass on these
marks, draw an arc
to the centre from each.
3. connect intersection of arcs
to B using a ruler.

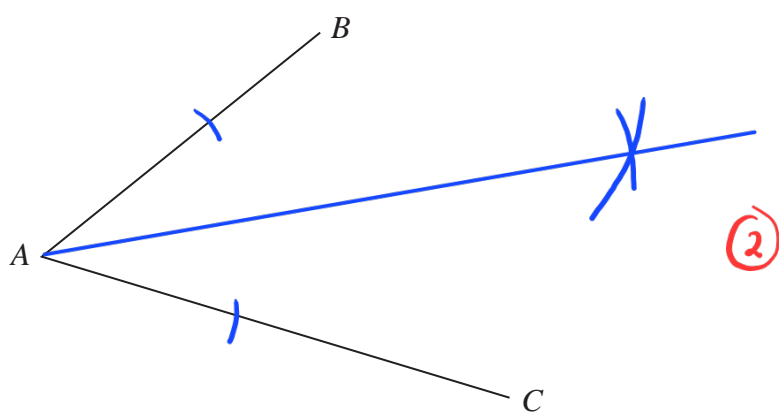
(Total for Question 1 is 2 marks)

- 2 Use ruler and compasses only to construct the perpendicular bisector of the line AB .
You must show all your construction lines.



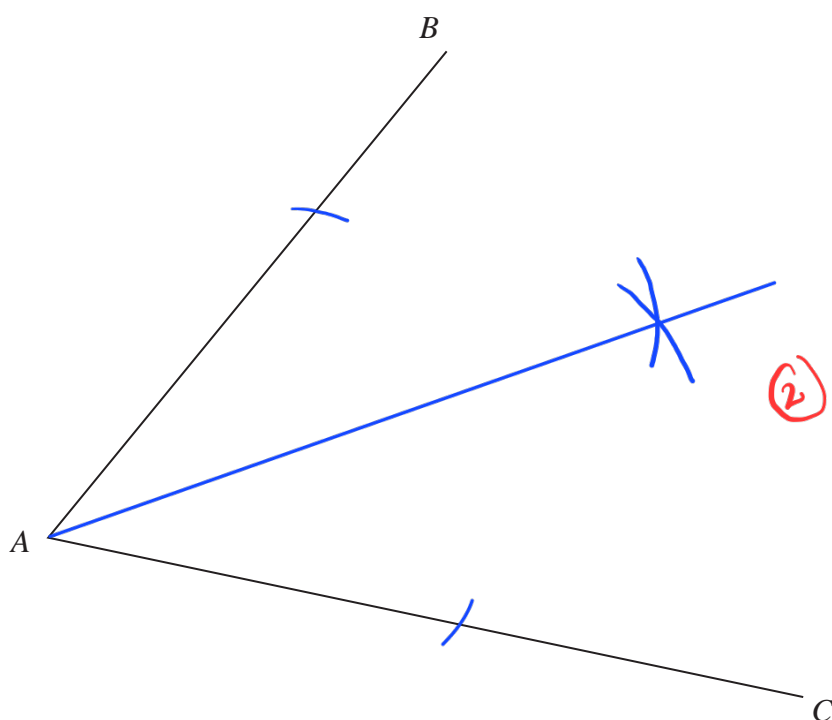
(Total for Question 2 is 2 marks)

- 3 Use ruler and compasses to construct the bisector of angle BAC .
You must show all your construction lines.



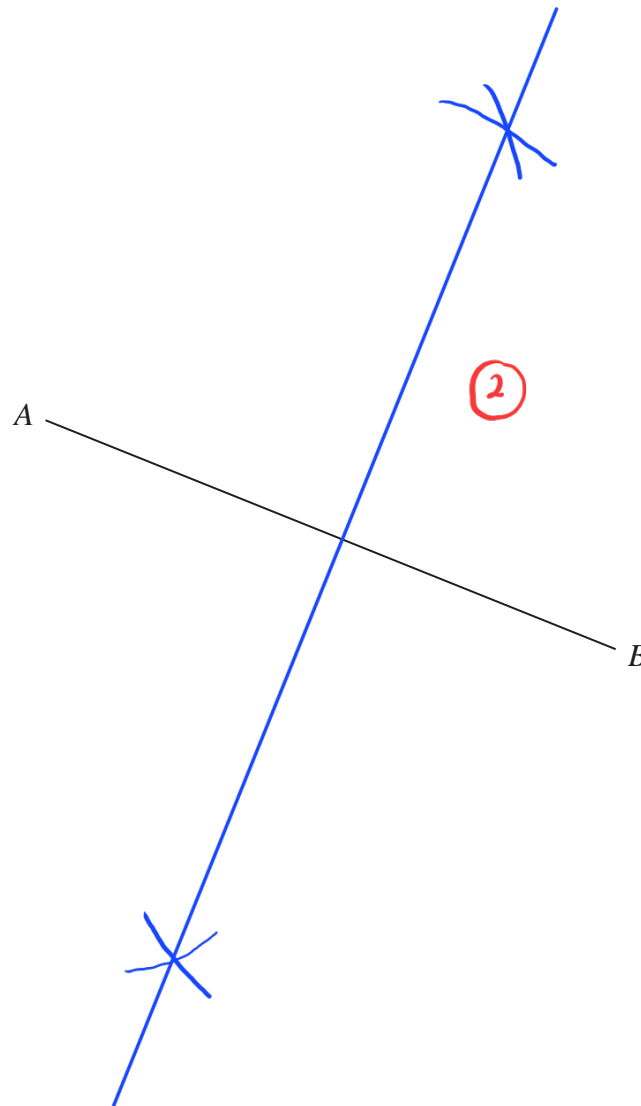
(Total for Question 3 is 2 marks)

- 4 Using ruler and compasses only, construct the bisector of angle BAC
You must show all your construction lines.



(Total for Question 4 is 2 marks)

- 5 Use ruler and compasses only to construct the perpendicular bisector of line AB
You must show all your construction lines.



(Total for Question 5 is 2 marks)